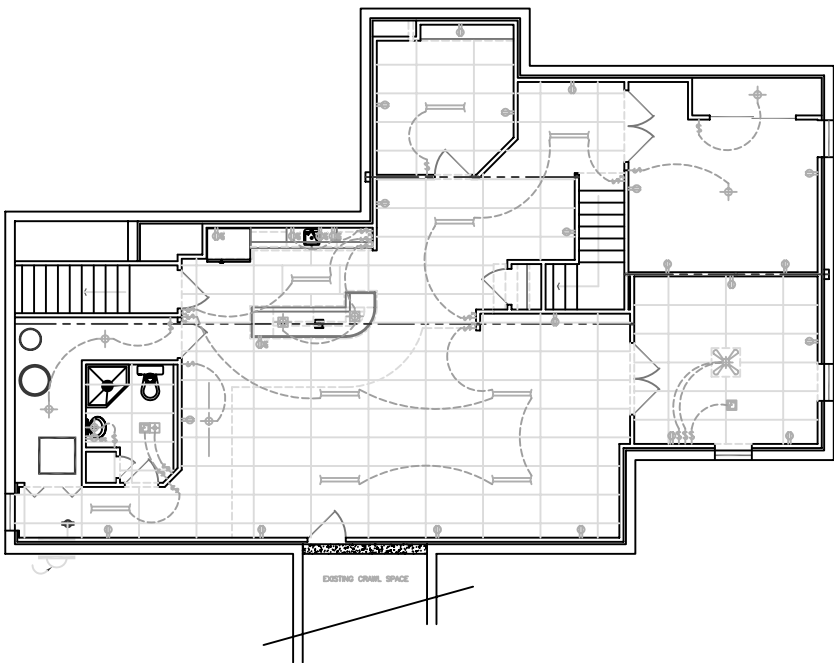




| GENERAL ELECTRICAL SYMBOL LEGEND |                               |        |                               |
|----------------------------------|-------------------------------|--------|-------------------------------|
| SYMBOL                           | DESCRIPTION                   | SYMBOL | DESCRIPTION                   |
|                                  | 110 V. OUTLET                 |        | EXHAUST FAN                   |
|                                  | HALF SWITCHED 110 V. OUTLET   |        | EXHAUST FAN/LIGHT COMBINATION |
|                                  | WEATHERPROOF 110 V. OUTLET    |        | PADDLE FAN/LIGHT FIXTURE      |
|                                  | GROUND FAULT 110 V. OUTLET    |        | PADDLE FAN                    |
|                                  | 220 V. OUTLET                 |        | TWO-WAY SWITCH                |
|                                  | FLOOR 110 V. OUTLET           |        | THREE-WAY SWITCH              |
|                                  | SURFACE MOUNT LIGHT           |        | FOUR-WAY SWITCH               |
|                                  | RECESSED LIGHT                |        | SMOKE DETECTOR (WALL)         |
|                                  | WALL MOUNT LIGHT              |        | SMOKE DETECTOR (CEILING)      |
|                                  | PULL-CORD SURFACE MOUNT LIGHT |        | THERMOSTAT                    |
|                                  | FLOOD LIGHT                   |        | CHIMES                        |
|                                  | FLOURESCENT LIGHT             |        | TELEPHONE                     |
|                                  | TRACK LIGHT                   |        | HEAT LAMP                     |
|                                  | UNDER COUNTER LIGHT           |        |                               |

**NOTE:**  
ELECTRICIAN TO PROVIDE AND INSTALL ALL FLOURESCENT, RECESSED CANS, AND TRACK LIGHTING FIXTURES. SURFACE MOUNTED FIXTURE TO BE PROVIDED BY OWNER AND INSTALLED BY ELECTRICIAN.



**REC. ROOM ELECTRICAL PLAN**  
SCALE 1/4" = 1'-0"

Drawing date  
11/15/05  
Drawn by  
S.J.  
Reviewed by  
Drawing code

revision date bnt

**CUSTOM  
DESIGNED  
FOR:**

690 Lily Cache Lane, Bolingbrook, IL 60440  
www.HomeSourceBuilders.net  
Home Source Builders & Remodelers Office: (630) 759-7496 • sj@homesourcebuilders.net

Sheet no.  
**2**  
of 2